



ARBOR

AT ELLEN GROVE



MACKENZIE 225

Lot 1135 Marigold St
Ellen Grove

\$513,362

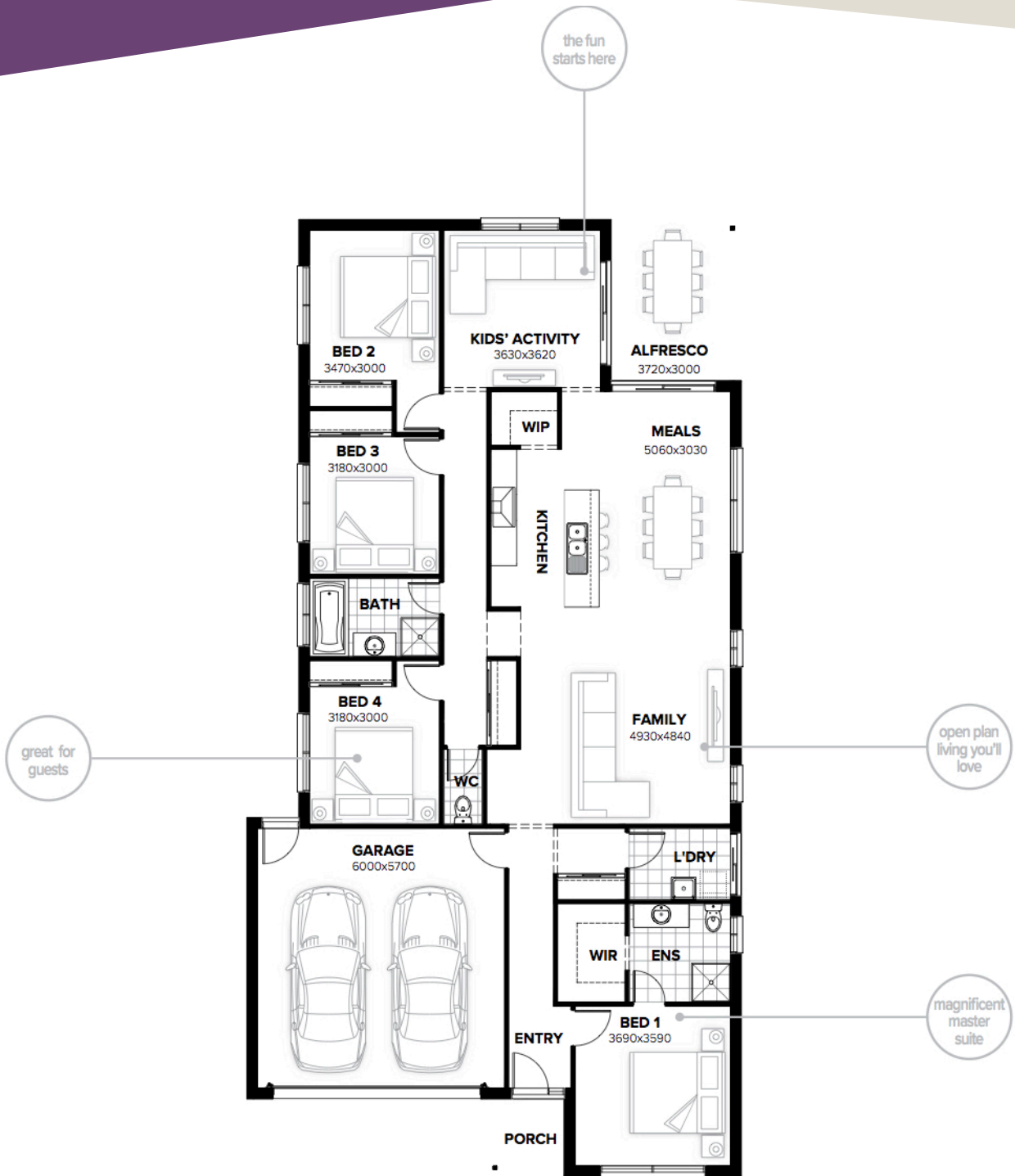


HOUSE AREA: 225m²
LAND AREA: 411m²

- H1 class foundation & site costs
- Open plan living & dining with kids' retreat
- Stone kitchen benchtop
- Kitchen appliances including 900mm electric cooktop, rangehood & 600mm oven
- NBN ready & LED lighting throughout
- Fly screens
- Landscaping
- 2550mm high ceilings & ducted air conditioning
- BAL allowance

Burbank 
#noplacelikehome

ENQUIRIES – CALL (07) 3278 9193
461 WATERFORD ROAD, ELLEN GROVE
ARBORELLENGROVE.COM.AU



All descriptions have been prepared in good faith and with due care however may be subject to change without notice at any time. Home facade & floorplan are indicative and are to be used as a representation only.

ENQUIRIES – CALL (07) 3278 9193
 461 WATERFORD ROAD, ELLEN GROVE
 ARBORELLENGROVE.COM.AU