



# ARBOR

AT ELLEN GROVE



## MACKENZIE 225

Lot 1135 Marigold St  
*Ellen Grove*

# \$513,362

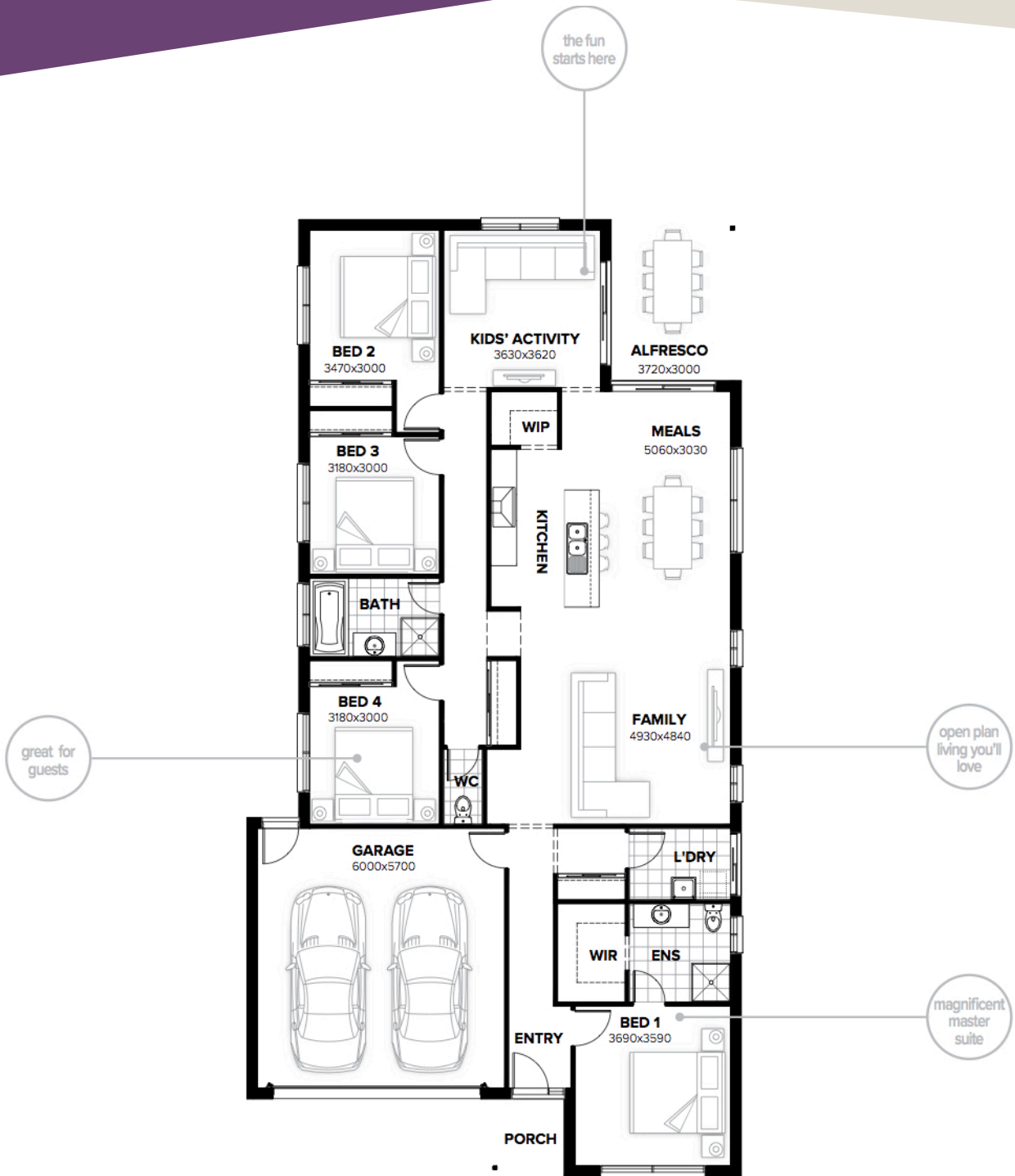


**HOUSE AREA:** 225m<sup>2</sup>  
**LAND AREA:** 411m<sup>2</sup>

- H1 class foundation & site costs
- Open plan living & dining with kid's retreat
- Stone kitchen benchtop
- Kitchen appliances including 900mm electric cooktop, rangehood & 600mm oven
- NBN ready & LED lighting throughout
- Fly screens
- Landscaping
- 2550mm high ceilings & ducted air conditioning
- BAL allowance

**Burbank**   
*#noplacelikehome*

**ENQUIRIES – CALL (07) 3278 9193**  
461 WATERFORD ROAD, ELLEN GROVE  
ARBORELLENGROVE.COM.AU



All descriptions have been prepared in good faith and with due care however may be subject to change without notice at any time. Home facade & floorplan are indicative and are to be used as a representation only.

**ENQUIRIES – CALL (07) 3278 9193**

461 WATERFORD ROAD, ELLEN GROVE  
 ARBORELLENGROVE.COM.AU