



ARBOR

AT ELLEN GROVE

REGENT

Lot 849, Wisteria Street, Ellen Grove

\$360,790



HOUSE AREA: 209m²

LAND AREA: 257m²

- Colorbond roof & modern facade
- Exposed aggregate driveway, porch & paths
- Open plan living & dining area
- 20mm stone kitchen benchtop
- Kitchen appliances including oven, gas cooktop & rangehood
- LED downlights & NBN ready
- 26L gas hot water system
- Carpet to bedrooms, tiles to remainder
- Letterbox, clothesline, landscaping, turfing & fencing
- Alfresco included



500 WATERFORD ROAD, ELLEN GROVE, QUEENSLAND

PHONE 0499 316 870



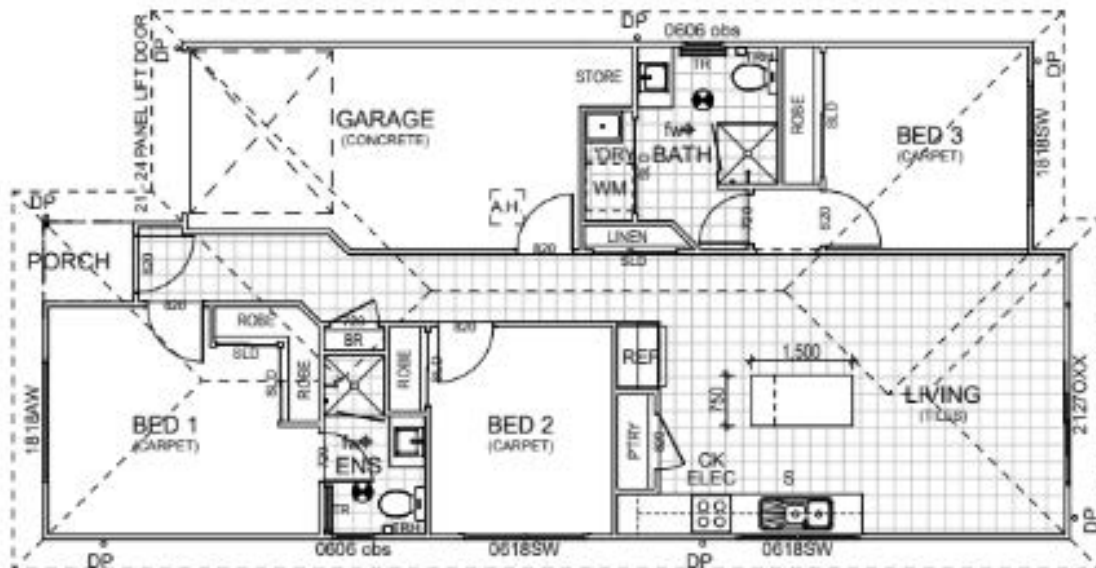
WWW.PENFOLDPROPERTYGROUP.COM

A PENFOLD PROPERTY GROUP DEVELOPMENT



ARBOR

AT ELLEN GROVE



*Terms & conditions apply. All descriptions have been prepared in good faith and with due care however may be subject to change without notice at any time. Home facade & floorplan are indicative and are to be used as a representation only.

500 WATERFORD ROAD, ELLEN GROVE, QUEENSLAND

PHONE 0499 316 870



WWW.PENFOLDPROPERTYGROUP.COM

A PENFOLD PROPERTY GROUP DEVELOPMENT