

PRIMROSE CITY HOMES



BALMORAL

Lot 721, Primrose Place, Doolandella

\$503,559



HOUSE AREA: 204m²

LAND AREA: 375m²

- Site and slab allowance
- Colorbond roof
- Upgraded facade
- 20mm stone benchtops to kitchen
- Ceiling fans
- Blockout roller blinds to windows and sliding doors
- Clothesline, letterbox, TV antenna included
- NBN ready
- Landscaping and turfing included

Burbank 
#noplacelikehome



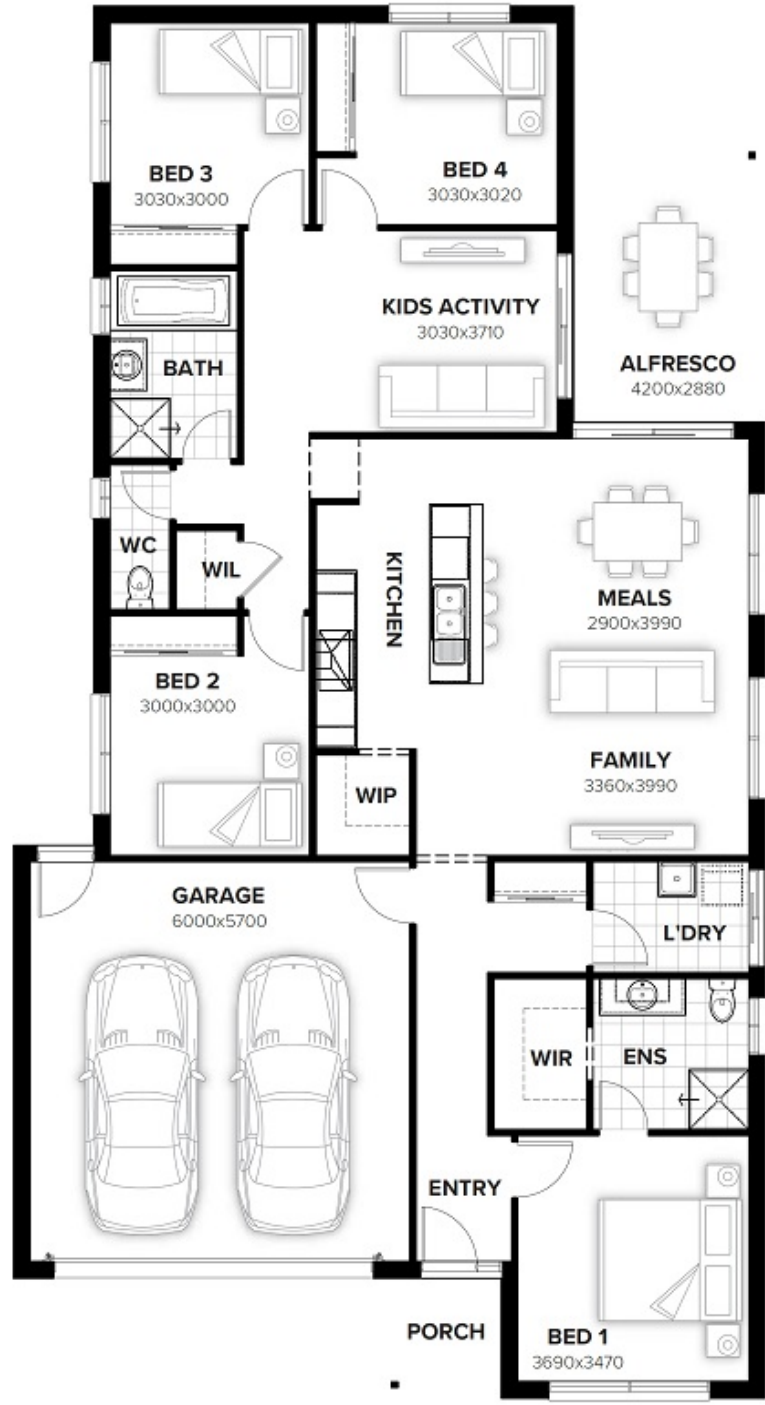
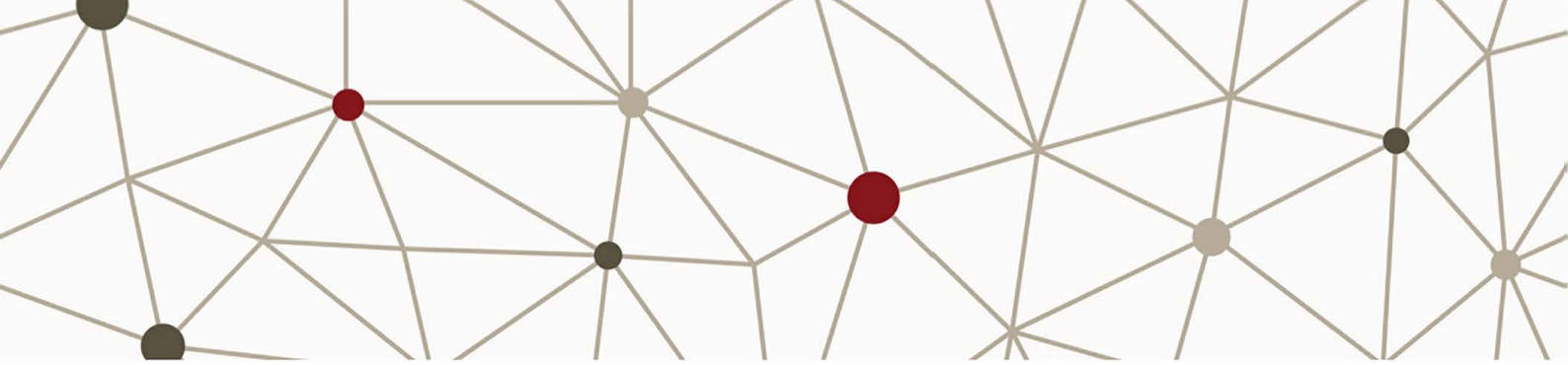
Hampstead Heath Sales Display
63 Crossacres Street, Doolandella, Qld
Call David Thomas 0417 082 398

WWW.PENFOLDPROPERTYGROUP.COM



HAMPSTEAD HEATH

A PENFOLD PROPERTY GROUP DEVELOPMENT



Hampstead Heath Sales Display
63 Crossacres Street, Doolandella, Qld
Call David Thomas 0417 082 398

WWW.PENFOLDPROPERTYGROUP.COM



HAMPSTEAD HEATH

A PENFOLD PROPERTY GROUP DEVELOPMENT

All images which appear in this brochure are indicative and may vary from the final product. All descriptions have been prepared in good faith and with due care however may be subject to change without notice at any time. Check with your builder / council regarding siting and driveway access. Purchasers should inform and assure themselves by inspection, independent advice or as otherwise necessary prior to purchase. ©Penfold Property Group Pty Ltd ACN 163 575 728. All plans are copyright in whole and in part. E23615