



ARBOR

AT ELLEN GROVE



EVERGLADE

Lot 1132 Marigold St
Ellen Grove



4



2



2

HOUSE AREA: 181m²
LAND AREA: 415 m²



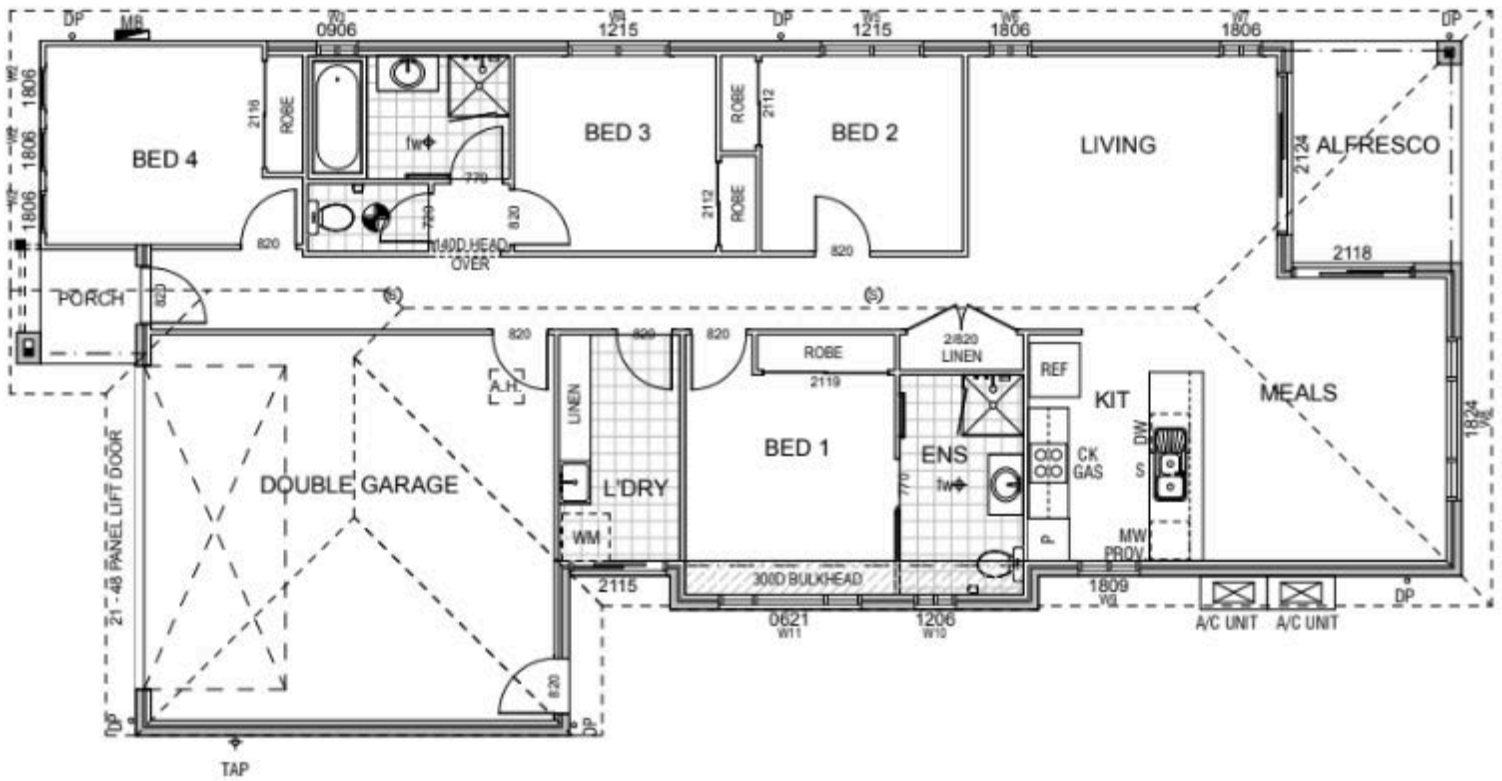
LANDMARK
BUILDING & DEVELOPMENTS

\$507,460

- Fully turnkey
- Includes 2 split system air-con
- High ceilings 2590mm
- Roller blinds and security screens included
- Bathroom and kitchen include 20mm stone benchtops
- Includes cooktop, oven, rangehood and dishwasher
- NBN ready
- Fixed price contract

ENQUIRIES – CALL (07) 3278 9193

461 WATERFORD ROAD, ELLEN GROVE
ARBORELLENGROVE.COM.AU



All descriptions have been prepared in good faith and with due care however may be subject to change without notice at any time. Home facade & floorplan are indicative and are to be used as a representation only.

ENQUIRIES – CALL (07) 3278 9193
 461 WATERFORD ROAD, ELLEN GROVE
 ARBORELLENGROVE.COM.AU