



TENERIFFE MK II

Lot 5 Lakes Edge Lane
Ellen Grove

\$445,109



HOUSE AREA: 134m²
LAND AREA: 311m²

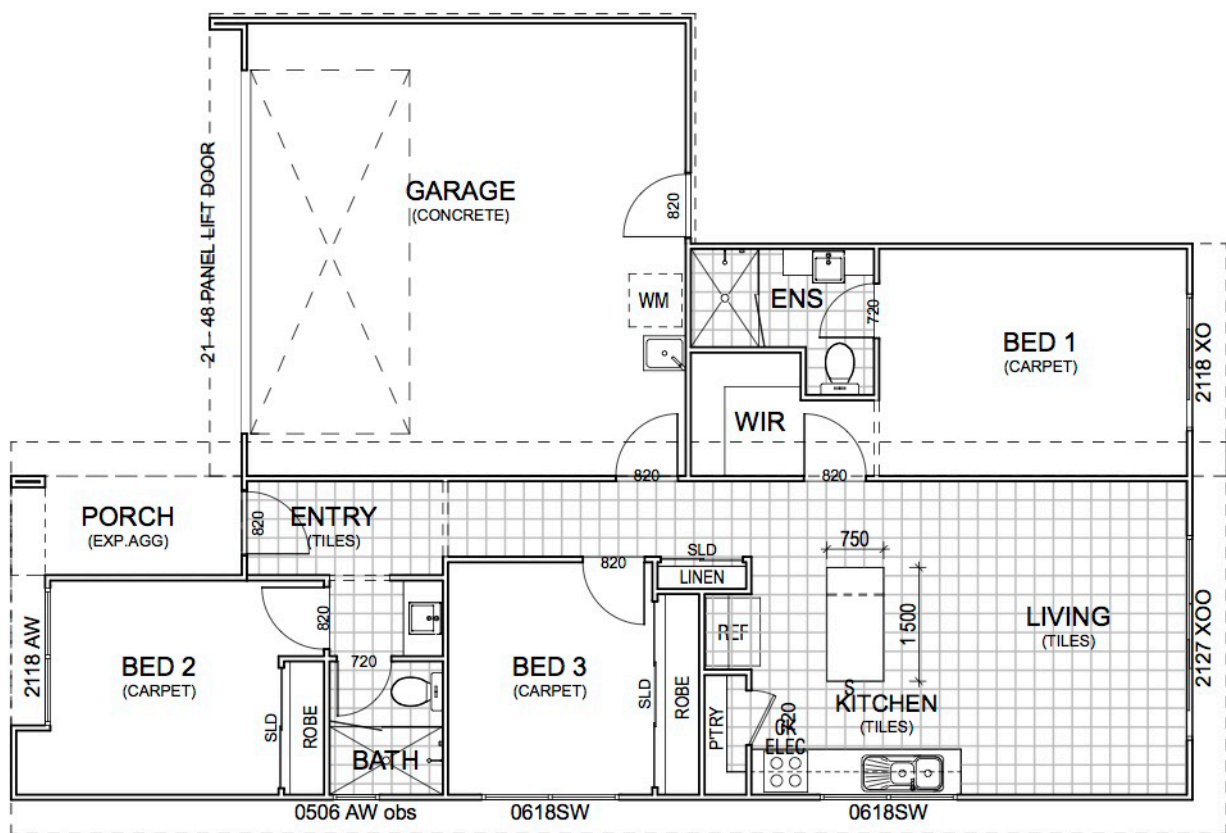
- Full turnkey including landscaping, fencing, letterbox and clothesline
- Colorbond roof
- Barrier screens included
- 600mm appliances including cooktop, oven, rangehood and dishwasher
- Stone benchtops in kitchen and bathroom
- Soft close drawers
- NBN ready
- 2 split system aircons (bedroom and living)



LANDMARK
BUILDING & DEVELOPMENTS

ENQUIRIES CALL 07 3278 9193

150 LOVAT STREET, ELLEN GROVE
PENFOLDHOMES.COM.AU



All descriptions have been prepared in good faith and with due care however may be subject to change without notice at any time. Home facade & floorplan are indicative and are to be used as a representation only.

ENQUIRIES CALL 07 3278 9193

150 LOVAT STREET, ELLEN GROVE
PENFOLDHOMES.COM.AU