



SANCTUARY  
POCKET



Urban Facade

## HUDSON 261

Lot 17 New Road,  
Doolandella



House Area: 261m<sup>2</sup>  
Land Area: 402m<sup>2</sup>

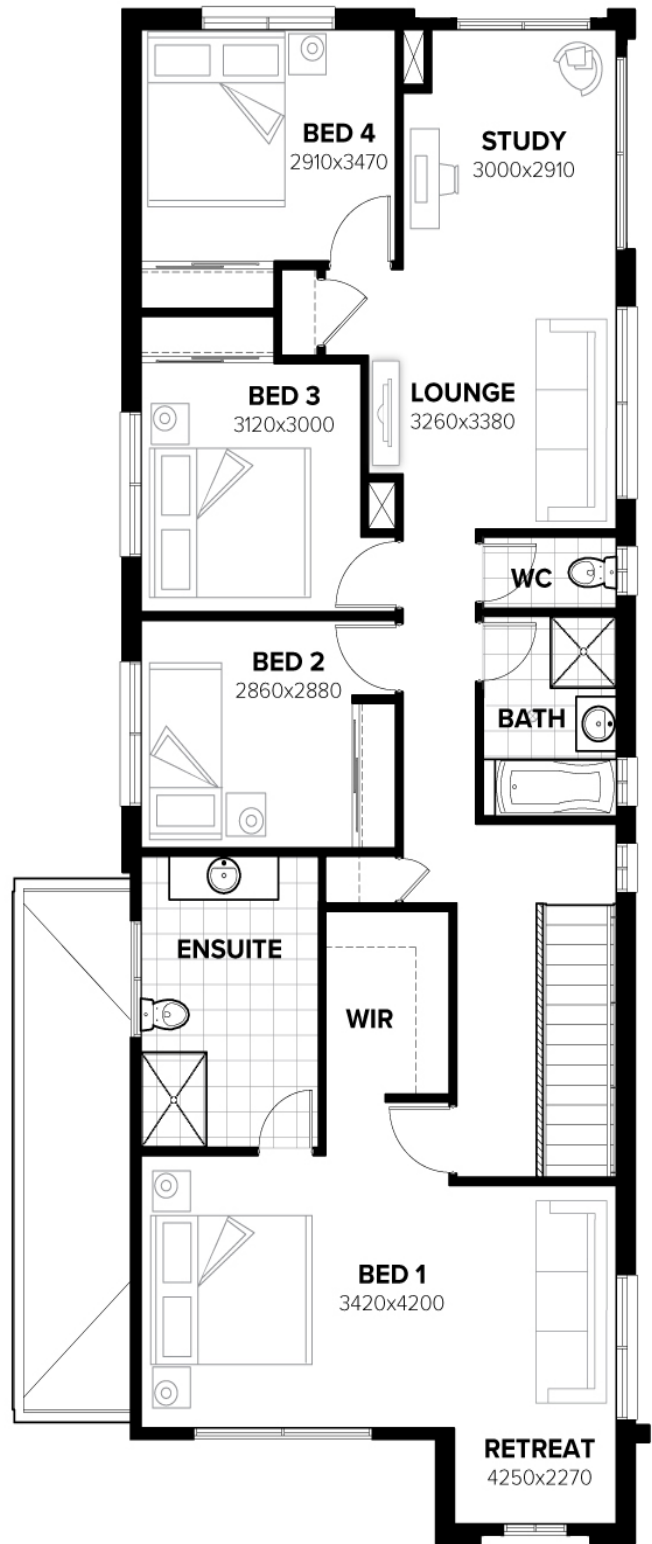
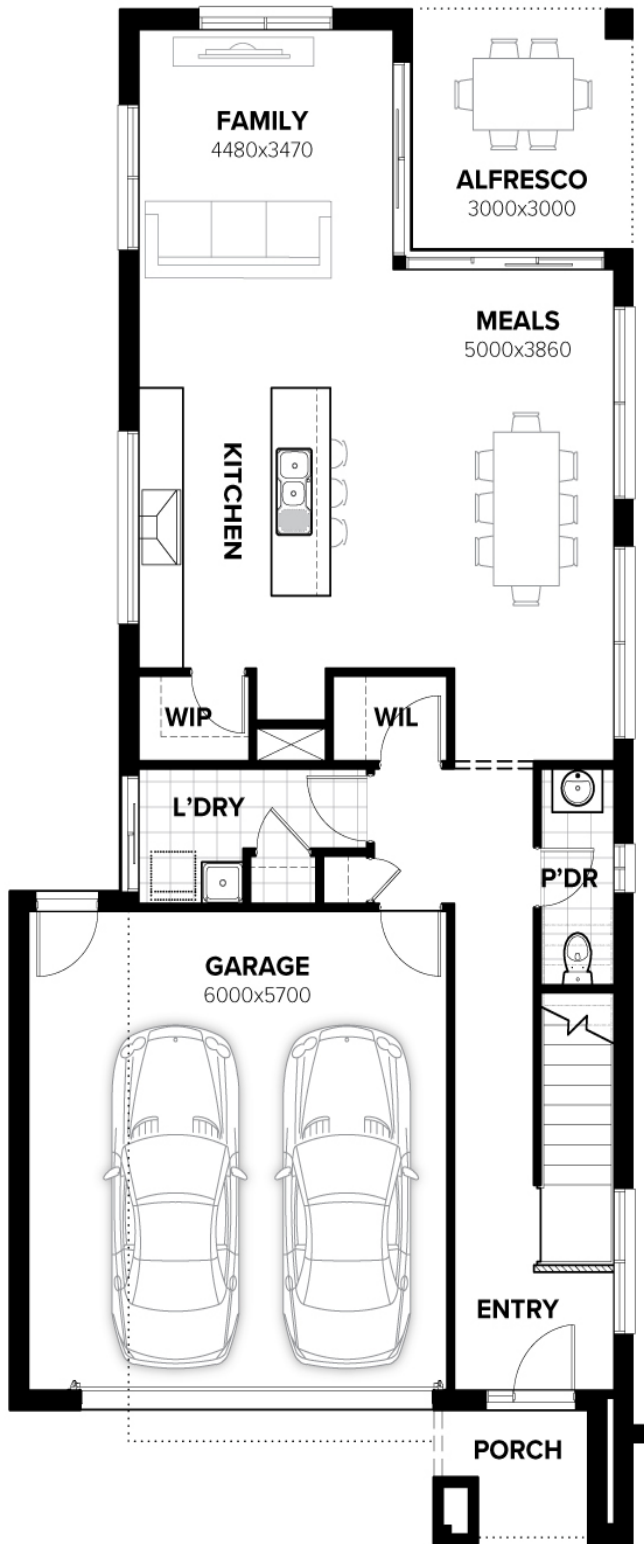
**Burbank**   
#noplacelikehome

# \$1,012,800

- Allowances for site costs (H1 slab classification)
- High ceilings
- Floor coverings throughout
- 20mm stone benchtops throughout
- Ducted air-conditioning
- Exposed aggregate driveway
- Turf & landscaping to front yard
- And more inclusions!

Enquiries : Call (07) 3278 9193

53 Crossacres Street, Doolandella.  
[sanctuarypocket.com.au](http://sanctuarypocket.com.au)



\*Refer builder specific package details for more information. All descriptions have been prepared in good faith and with due care however may be subject to change without notice at any time. Home facade & floorplan are indicative and are to be used as a representation only.

**Enquiries : Call (07) 3278 9193**

53 Crossacres Street, Doolandella.  
sanctuarypocket.com.au